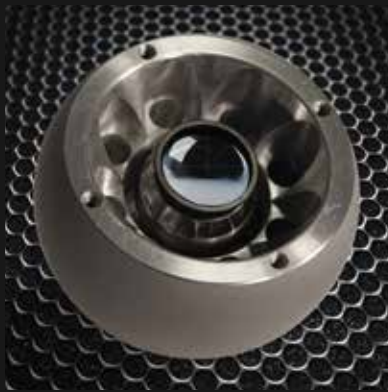


3D LANDSCAPE SCANNING

We provide the tools to ensure unmatched precision and accuracy.

Our goal is to offer the best quality product at a reasonable price. Bal-tec, a division of Micro Surface Engineering, has been producing spheres since 1952. We produce some of the world's highest quality spheres on a daily basis. We manufacture all of our products in Los Angeles, California. Bal-tec manufactures spheres in size from .010 inch (.25mm) to 20 inch (500mm) diameter out of most materials. Our facilities contain over 50,000 square feet of manufacturing space and 100's of state of the art machines.

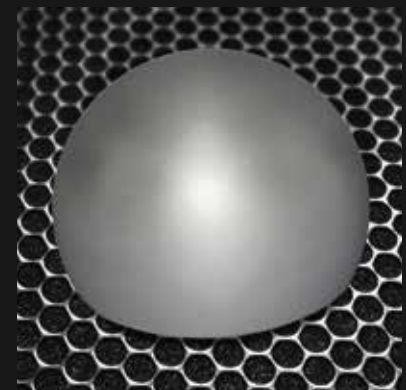


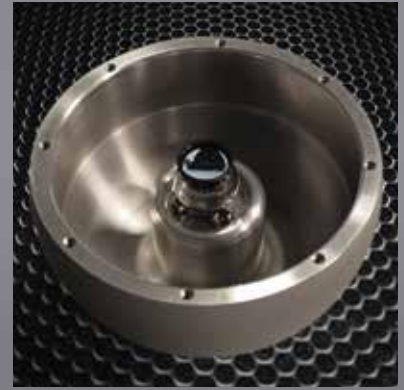
Bal-tec Integration Spheres are highly accurate laser scanning targets. These spheres are aluminum with a "satin finish", which means they have an ideal lambertian finish for laser scanning. The ball is hollowed out and a nest is created inside to locate a 1.5 inch (38mm) diameter SMR. The location of the integration sphere can then be measured using both, a laser scanner and a laser tracker.

Other integrations include laser scanner and theodolite, laser scanner and portable arm CMM .

The positional accuracy of the nest to the spherical diameter (what we call coincident) is <5 microns

The nest inside for the 1.5 ball is adjustable and can be tailored to fit individual spheres which might have a size variance.





INTEGRATION SPHERE MOUNTS

Pre-Base Installation

INTEGRATION SPHERES

Integration Spheres, part numbers are as follows. TSI stands for target sphere integration followed by a dash followed by the diameter size. TSIT stands for Target Sphere Integration Tapped, which identifies a flat surface on the outside diameter for mounting purposes. Current diameters available are 3.5 (3.5 inch diameter) to fit older optical tooling mounts. 100 is a millimeter designation along with 148 and 200 millimeter.

PRODUCT I.D.	MEASUREMENTS	PRODUCT NAME	PRODUCT COST
TSI-35	3.5 inch	Integration Sphere	\$413.00
TSI-100	100MM	Integration Sphere	\$433.00
TSI- 148	148MM	Integration Sphere	\$546.00
TSI- 200	200MM	Integration Sphere	\$658.00
TSIT- 100	100MM	Integration Sphere	\$458.00
TSIT- 148	148MM	Integration Sphere	\$571.00
TSIT- 200	200MM	Integration Sphere	\$682.00



SCANNING SPHERES
 TOOLS • FOR • METROLOGY
 DIVISION OF BAL-TEC

Scanning Spheres / Bal-tec Division
 5425 Pacific Blvd.
 Huntington Park, CA 90255

Phone: 800-322-5832
 Email: info@scanningspheres.com

Business Hours | Mon - Fri: 9 a.m. - 5 p.m. | Sat/Sun: Closed